

Advanced Analysis and Reporting



Improving Network Performance



Increasing Reliability



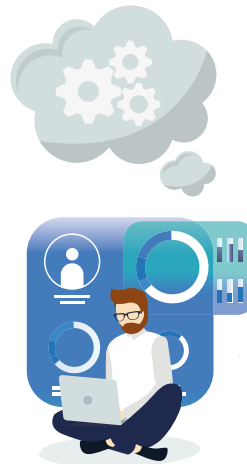
Reducing the Mean-Time-to-Resolve



Reducing Downtime



Identifying Faults Quickly



Advanced Analysis and Reporting! - Automate the creation and dissemination of detailed operational and executive-level reports with opReports. Extend NMIS' built-in reporting functionality with both real time and historical detailed node-level, Quality of Service (QoS), WAN, Response Time, and Interface Utilization reports. opReports provides reporting flexibility through an easy to use interface – no need for SQL query experience, or cumbersome report generation systems. Build your custom reports quickly by node, group, length of report, start and/or end dates and specify your output format. Report generation can be automated, and the results viewed in the GUI or emailed for dissemination in multiple different formats including CSV, Excel XLSX and HTML.



Actionable Insights

Reports clearly identify conditions, which will require action, along with details required by engineers for further investigation.



Expert Analysis

Expert analysis of key infrastructure health metrics, including router, switch, server, virtual machine and CPU.



Custom Rules

Identify conditions and potential business impact, create easy to interpret "traffic lights" for IT managers and administrators.



Deep Insights Into NMIS Data

The advanced reporting is designed to delve into the data that NMIS collects about your network. The reports deliver insights into service levels and measures the trends and performance of your environment.



Archiving Ability

Historical comparison is available for all reports that have been generated, view trends easily on all recorded metrics.



QoS Reporting

The industry's leading Class-Based Quality of Service (CBQoS) reporting, detailed analysis of each interface, policy and class where Cisco CBQoS is running as well as full support of Cisco Hierarchical Quality of Service